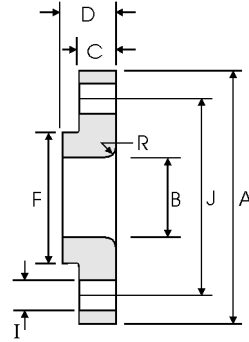


Lap Joint Flanges - ANSI B16.5



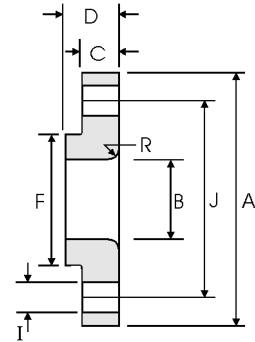
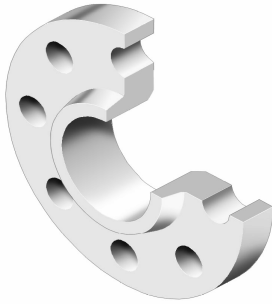
Class 150 lb

Nominal Pipe Size	Pipe	Flange Data				Lap	Hub	Drilling Data			Weight
		A	B	C	D	R	F	H	I	J	
	Outside Diameter	Overall Diameter	Inside Diameter	Flange Thickness min	Overall Length	Lap Radius	Hub Diameter	Number of Holes	Bolt Hole Diameter	Diameter of Circle of Holes	kg/ piece
	in mm	in mm	in mm	in mm	in mm	in mm	in mm		in mm	in mm	
1/2	0.840	3.500	0.900	0.440	0.620	0.120	1.190	4	0.620	2.380	0.38
	21.30	88.90	22.90	11.20	15.70	3.000	30.20		15.70	60.45	
3/4	1.050	3.880	1.110	0.500	0.620	0.120	1.500	4	0.620	2.750	0.55
	26.70	98.60	28.20	12.70	15.70	3.000	38.10		15.70	69.85	
1	1.315	4.250	1.380	0.560	0.690	0.120	1.940	4	0.620	3.120	0.76
	33.40	108.0	35.10	14.20	17.50	3.000	49.30		15.70	79.25	
1 1/4	1.660	4.620	1.720	0.620	0.810	0.190	2.310	4	0.620	3.500	1.01
	42.20	117.3	43.70	15.70	20.60	4.800	58.70		15.70	88.90	
1 1/2	1.900	5.000	1.970	0.690	0.880	0.250	2.560	4	0.620	3.880	1.30
	48.30	127.0	50.00	17.50	22.40	6.400	65.00		15.70	98.60	
2	2.375	6.000	2.460	0.750	1.000	0.310	3.060	4	0.750	4.750	2.03
	60.30	152.4	62.50	19.10	25.40	7.900	77.70		19.10	120.7	
2 1/2	2.875	7.000	2.970	0.880	1.120	0.310	3.560	4	0.750	5.500	3.25
	73.00	177.8	75.40	22.40	28.40	7.900	90.40		19.10	139.7	
3	3.500	7.500	3.600	0.940	1.190	0.380	4.250	4	0.750	6.000	3.81
	88.90	190.5	91.40	23.90	30.20	9.700	108.0		19.10	152.4	
3 1/2	4.000	8.500	4.100	0.940	1.250	0.380	4.810	8	0.750	7.000	4.76
	101.6	215.9	104.1	23.90	31.75	9.700	122.2		19.10	177.8	
4	4.500	9.000	4.600	0.940	1.310	0.440	5.310	8	0.750	7.500	5.25
	114.3	228.6	116.8	23.90	33.30	11.20	134.9		19.10	190.5	
5	5.563	10.00	5.690	0.940	1.440	0.440	6.440	8	0.880	8.500	6.02
	141.3	254.0	114.5	23.90	36.60	11.20	163.6		22.40	215.9	
6	6.625	11.00	6.750	1.000	1.560	0.500	7.560	8	0.880	9.500	7.40
	168.3	279.4	171.5	25.40	39.60	12.70	192.0		22.40	241.3	
8	8.625	13.50	8.750	1.120	1.750	0.500	9.690	8	0.880	11.75	12.1
	219.1	342.9	222.3	28.40	44.50	12.70	246.1		22.40	298.5	
10	10.75	16.00	10.92	1.190	1.940	0.500	12.00	12	1.000	14.25	16.4
	273.0	406.4	277.4	30.20	49.30	12.70	304.8		25.40	362.0	
12	12.75	19.00	12.92	1.250	2.190	0.500	14.38	12	1.000	17.00	26.1
	323.8	482.6	328.2	31.75	55.60	12.70	365.3		25.40	431.8	
14	14.00	21.00	14.18	1.380	3.120	0.500	15.75	12	1.120	18.75	34.5
	355.6	533.4	360.2	35.10	79.25	12.70	400.1		28.40	476.3	
16	16.00	23.50	16.19	1.440	3.440	0.500	18.00	16	1.120	21.25	44.6
	406.4	596.9	411.2	36.60	87.40	12.70	457.2		28.40	539.8	
18	18.00	25.00	18.20	1.560	3.810	0.500	19.88	16	1.250	22.75	48.7
	457.2	635.0	462.3	39.60	96.80	12.70	505.0		31.75	577.9	
20	20.00	27.50	20.25	1.690	4.060	0.500	22.00	20	1.250	25.00	61.6
	508.0	698.5	514.4	42.90	103.1	12.70	558.8		31.75	635.0	
24	24.00	32.00	24.25	1.880	4.380	0.500	26.12	20	1.380	29.50	86.6
	609.6	812.8	616.0	47.80	111.3	12.70	663.4		35.10	749.3	

Notes

- Weights are based on manufacturer's data and are approximate.
- For tolerances see page 8-4.

Lap Joint Flanges - ANSI B16.5



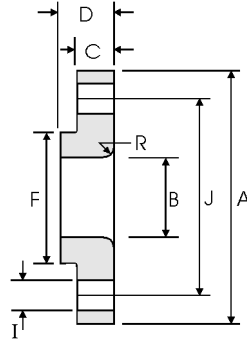
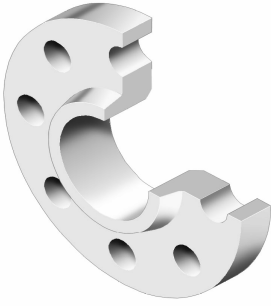
Class 300 lb

Nominal Pipe Size	Pipe	Flange Data				Lap	Hub	Drilling Data			Weight
		A	B	C	D	R	F	H	I	J	
	Outside Diameter	Overall Diameter	Inside Diameter	Flange Thickness min	Overall Length	Lap Radius	Hub Diameter	Number of Holes	Bolt Hole Diameter	Diameter of Circle of Holes	kg/ piece
	in mm	in mm	in mm	in mm	in mm	in mm	in mm		in mm	in mm	
1/2	0.840	3.750	0.900	0.560	0.880	0.120	1.500	4	0.620	2.620	0.62
	21.30	95.20	22.90	14.20	22.30	3.000	38.10		15.70	66.55	
3/4	1.050	4.620	1.110	0.620	1.000	0.120	1.880	4	0.750	3.250	1.10
	26.70	117.3	28.20	15.70	25.40	3.000	47.70		19.00	82.50	
1	1.315	4.880	1.380	0.690	1.060	0.120	2.120	4	0.750	3.500	1.33
	33.40	123.9	35.10	17.50	26.90	3.000	53.80		19.0	88.90	
1 1/4	1.660	5.250	1.720	0.750	1.060	0.190	2.500	4	0.750	3.880	1.65
	42.20	133.3	43.70	19.00	26.90	4.800	63.50		19.00	98.50	
1 1/2	1.900	6.120	1.970	0.810	1.190	0.250	2.750	4	0.880	4.500	2.44
	48.30	155.4	50.00	20.60	30.20	6.400	69.85		22.30	114.3	
2	2.375	6.500	2.460	0.880	1.310	0.310	3.310	8	0.750	5.000	2.83
	60.30	165.1	62.50	22.30	33.20	7.900	84.00		19.10	127.0	
2 1/2	2.875	7.500	2.970	1.000	1.500	0.310	3.940	8	0.880	5.880	4.25
	73.00	190.5	75.40	25.40	38.10	7.900	100.0		22.30	149.3	
3	3.500	8.250	3.600	1.120	1.690	0.380	4.620	8	0.880	6.620	5.78
	88.90	209.5	91.40	28.40	42.90	9.700	117.3		22.30	168.1	
3 1/2	4.000	9.000	4.100	1.190	1.750	0.380	5.250	8	0.880	7.250	7.27
	101.6	228.6	104.1	30.20	44.40	9.700	133.3		22.30	184.1	
4	4.500	10.00	4.600	1.250	1.880	0.440	5.750	8	0.880	7.880	9.55
	114.3	254.0	116.8	31.70	47.70	11.20	146.0		22.30	200.1	
5	5.563	11.00	5.690	1.380	2.000	0.440	7.000	8	0.880	9.250	12.2
	141.3	279.4	114.5	35.00	50.80	11.20	177.8		22.30	234.9	
6	6.625	12.50	6.750	1.440	2.060	0.500	8.120	12	0.880	10.62	15.5
	168.3	317.5	171.5	36.50	52.30	12.70	206.2		22.30	269.7	
8	8.625	15.00	8.750	1.620	2.440	0.500	10.25	12	1.000	13.00	24.1
	219.1	381.0	222.3	41.10	61.90	12.70	260.3		25.40	330.2	
10	10.75	17.50	10.92	1.880	3.750	0.500	12.62	16	1.120	15.25	34.4
	273.0	444.5	277.4	47.70	95.20	12.70	320.5		28.40	387.3	
12	12.75	20.50	12.92	2.000	4.000	0.500	14.75	16	1.250	17.75	50.4
	323.8	520.7	328.2	50.80	101.6	12.70	374.6		31.70	450.8	
14	14.00	23.00	14.18	2.120	4.380	0.500	16.75	20	1.250	20.25	70.9
	355.6	584.2	360.2	53.80	111.2	12.70	425.4		31.70	514.3	
16	16.00	25.50	16.19	2.250	4.750	0.500	19.00	20	1.380	22.50	89.5
	406.4	647.7	411.2	57.15	120.6	12.70	482.6		35.00	571.5	
18	18.00	28.00	18.20	2.380	5.120	0.500	21.00	24	1.380	24.75	111
	457.2	711.2	462.3	60.45	130.0	12.70	533.4		35.00	628.6	
20	20.00	30.50	20.25	2.500	5.500	0.500	23.12	24	1.380	27.00	137
	508.0	774.7	514.4	63.50	139.7	12.70	587.2		35.0	685.8	
24	24.00	36.00	24.25	2.750	6.000	0.500	27.62	24	1.620	32.00	204
	609.6	914.4	616.0	69.8	152.4	12.70	701.5		41.10	812.8	

Notes

- Weights are based on manufacturer's data and are approximate.
- For tolerances see page 8-4.

Lap Joint Flanges - ANSI B16.5



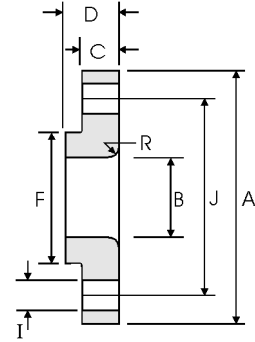
Class 400 lb

Nominal Pipe Size	Pipe	Flange Data					Lap	Hub	Drilling Data			Weight
		A	B	C	D	R	F	H	I	J		
	Outside Diameter	Overall Diameter	Inside Diameter	Flange Thickness min	Overall Length	Lap Radius	Hub Diameter	Number of Holes	Bolt Hole Diameter	Diameter of Circle of Holes	kg/ piece	
	in mm	in mm	in mm	in mm	in mm	in mm	in mm		in mm	in mm		
1/2	0.840	3.750	0.900	0.560	0.880	0.120	1.500	4	0.620	2.620	0.72	
	21.30	95.30	22.90	14.20	22.40	3.000	38.10		15.70	66.55		
3/4	1.050	4.620	1.110	0.620	1.000	0.120	1.880	4	0.750	3.250	1.25	
	26.70	117.3	28.20	15.70	25.40	3.000	47.80		19.10	82.60		
1	1.315	4.880	1.380	0.690	1.060	0.120	2.120	4	0.750	3.500	1.50	
	33.40	124.0	35.10	17.50	26.90	3.000	53.80		19.10	88.90		
1 1/4	1.660	5.250	1.720	0.810	1.120	0.190	2.500	4	0.750	3.880	2.00	
	42.20	133.4	43.70	20.60	28.40	4.800	63.50		19.10	98.60		
1 1/2	1.900	6.120	1.970	0.880	1.250	0.250	2.750	4	0.880	4.500	2.92	
	48.30	155.4	50.00	22.40	31.75	6.400	69.85		22.40	114.3		
2	2.375	6.500	2.460	1.000	1.440	0.310	3.310	8	0.750	5.000	3.55	
	60.30	165.1	62.50	25.40	36.60	7.900	84.10		19.10	127.0		
2 1/2	2.875	7.500	2.970	1.120	1.620	0.310	3.940	8	0.880	5.880	5.23	
	73.00	190.5	75.40	28.40	41.10	7.900	100.1		22.40	149.4		
3	3.500	8.250	3.600	1.125	1.810	0.380	4.620	8	0.880	6.620	6.95	
	88.90	209.6	91.40	31.75	46.00	9.700	117.3		22.40	168.1		
3 1/2	4.000	9.000	4.100	1.380	1.940	0.380	5.250	8	1.000	7.250	8.78	
	101.6	228.6	104.1	35.10	49.30	9.700	133.4		25.40	184.2		
4	4.500	10.00	4.600	1.380	2.000	0.440	5.750	8	1.000	7.880	10.9	
	114.3	254.0	116.8	35.10	50.80	11.20	146.1		25.40	200.2		
5	5.563	11.00	5.690	1.500	2.120	0.440	7.000	8	1.000	9.250	13.7	
	141.3	279.4	114.5	38.10	53.80	11.20	177.8		25.40	235.0		
6	6.625	12.50	6.750	1.620	2.250	0.500	8.120	12	1.000	10.62	18.0	
	168.3	317.5	171.5	41.10	57.15	12.70	206.2		25.40	269.7		
8	8.625	15.00	8.750	1.880	2.690	0.500	10.25	12	1.120	13.00	28.3	
	219.1	381.0	222.3	47.80	68.30	12.70	260.4		28.40	330.2		
10	10.75	17.50	10.92	2.120	4.000	0.500	12.62	16	1.250	15.25	38.8	
	273.0	444.5	277.4	53.80	101.6	12.70	320.5		31.75	387.4		
12	12.75	20.50	12.92	2.250	4.250	0.500	14.75	16	1.380	17.75	56.6	
	323.8	520.7	328.2	57.15	108.0	12.70	374.7		35.10	450.9		
14	14.00	23.00	14.18	2.380	4.620	0.500	16.75	20	1.380	20.25	78.6	
	355.6	584.2	360.2	60.45	117.3	12.70	425.5		35.10	514.4		
16	16.00	25.50	16.19	2.500	5.000	0.500	19.00	20	1.500	22.50	100	
	406.4	647.7	411.2	63.50	127.0	12.70	482.6		38.10	571.5		
18	18.00	28.00	18.20	2.620	5.380	0.500	21.00	24	1.500	24.75	122	
	457.2	711.2	462.3	66.55	136.7	12.70	533.4		38.10	628.7		
20	20.00	30.50	20.25	2.750	5.750	0.500	23.12	24	1.620	27.00	145	
	508.0	774.7	514.4	69.85	146.1	12.70	587.2		41.10	685.8		
24	24.00	36.00	24.25	3.000	6.250	0.500	27.62	24	1.880	32.00	217	
	609.6	914.4	616.0	76.20	158.8	12.70	701.5		47.80	812.8		

Notes

- Weights are based on manufacturer's data and are approximate.
- For tolerances see page 8-4.

Lap Joint Flanges - ANSI B16.5



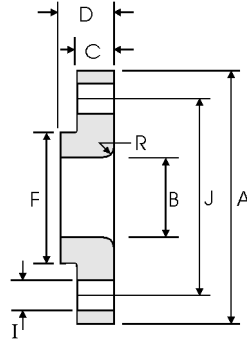
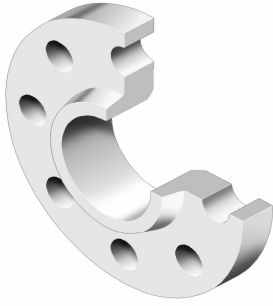
Class 600 lb

Nominal Pipe Size	Pipe	Flange Data				Lap	Hub	Drilling Data			Weight
		A	B	C	D	R	F	H	I	J	
	Outside Diameter	Overall Diameter	Inside Diameter	Flange Thickness min	Overall Length	Lap Radius	Hub Diameter	Number of Holes	Bolt Hole Diameter	Diameter of Circle of Holes	kg/ piece
	in mm	in mm	in mm	in mm	in mm	in mm	in mm		in mm	in mm	
1/2	0.840	3.750	0.900	0.560	0.880	0.120	1.500	4	0.620	2.620	0.72
	21.30	95.30	22.90	14.20	22.40	3.000	38.10		15.70	66.55	
3/4	1.050	4.620	1.110	0.620	1.000	0.120	1.880	4	0.750	3.250	1.25
	26.70	117.3	28.20	15.70	25.40	3.000	47.80		19.10	82.60	
1	1.315	4.880	1.380	0.690	1.060	0.120	2.120	4	0.750	3.500	1.50
	33.40	124.0	35.10	17.50	26.90	3.000	53.80		19.10	88.90	
1 1/4	1.660	5.250	1.720	0.810	1.120	0.190	2.500	4	0.750	3.880	2.00
	42.20	133.4	43.70	20.60	28.40	4.800	63.50		19.10	98.60	
1 1/2	1.900	6.120	1.970	0.880	1.250	0.250	2.750	4	0.880	4.500	2.92
	48.30	155.4	50.00	22.40	31.75	6.400	69.85		22.40	114.3	
2	2.375	6.500	2.460	1.000	1.440	0.310	3.310	8	0.750	5.000	3.55
	60.30	165.1	62.50	25.40	36.60	7.900	84.10		19.10	127.0	
2 1/2	2.875	7.500	2.970	1.120	1.620	0.310	3.940	8	0.880	5.880	5.23
	73.00	190.5	75.40	28.40	41.10	7.900	100.1		22.40	149.4	
3	3.500	8.250	3.600	1.125	1.810	0.380	4.620	8	0.880	6.620	6.95
	88.90	209.6	91.40	31.75	46.00	9.700	117.3		22.40	168.1	
3 1/2	4.000	9.000	4.100	1.380	1.940	0.380	5.250	8	1.000	7.250	8.78
	101.6	228.6	104.1	35.10	49.30	9.700	133.4		25.40	184.2	
4	4.500	10.75	4.600	1.500	2.120	0.440	6.000	8	1.000	8.500	14.4
	114.3	273.1	116.8	38.10	53.80	11.20	152.4		25.40	215.9	
5	5.563	13.00	5.690	1.750	2.380	0.440	7.440	8	1.120	10.50	24.3
	141.3	330.2	114.5	44.50	60.45	11.20	189.0		28.40	266.7	
6	6.625	14.00	6.750	1.880	2.620	0.500	8.750	12	1.120	11.50	28.5
	168.3	355.6	171.5	47.80	66.55	12.70	222.3		28.40	292.1	
8	8.625	16.50	8.750	2.190	3.000	0.500	10.75	12	1.250	13.75	43.1
	219.1	419.1	222.3	55.60	76.20	12.70	273.1		31.75	349.3	
10	10.75	20.00	10.92	2.500	4.380	0.500	13.50	16	1.380	17.00	70.5
	273.0	508.0	277.4	63.50	111.3	12.70	342.9		35.10	431.8	
12	12.75	22.00	12.92	2.620	4.620	0.500	15.75	20	1.380	19.25	86.1
	323.8	558.8	328.2	66.55	117.3	12.70	400.1		35.10	489.0	
14	14.00	23.75	14.18	2.750	5.000	0.500	17.00	20	1.500	20.75	100
	355.6	603.3	360.2	69.85	127.0	12.70	431.8		38.10	527.1	
16	16.00	27.00	16.19	3.000	5.500	0.500	19.50	20	1.620	23.75	145
	406.4	685.8	411.2	76.20	139.7	12.70	495.3		41.10	603.3	
18	18.00	29.25	18.20	3.250	6.000	0.500	21.50	20	1.750	25.75	177
	457.2	743.0	462.3	82.60	152.4	12.70	546.1		44.50	654.1	
20	20.00	32.00	20.25	3.500	6.500	0.500	24.00	24	1.750	28.50	225
	508.0	812.8	514.4	88.90	165.1	12.70	609.6		44.50	723.9	
24	24.00	37.00	24.25	4.000	7.250	0.500	28.25	24	2.000	33.00	318
	609.6	939.8	616.0	101.6	184.2	12.70	717.6		50.80	838.2	

Notes

- Weights are based on manufacturer's data and are approximate.
- For tolerances see page 8-4.

Lap Joint Flanges - ANSI B16.5



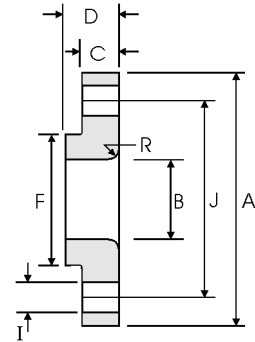
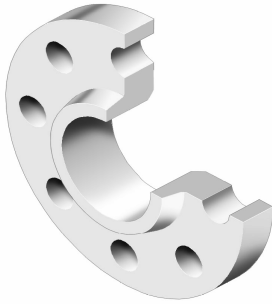
Class 900 lb

Nominal Pipe Size	Pipe	Flange Data				Lap	Hub	Drilling Data			Weight
		A	B	C	D	R	F	H	I	J	
	Outside Diameter	Overall Diameter	Inside Diameter	Flange Thickness min	Overall Length	Lap Radius	Hub Diameter	Number of Holes	Bolt Hole Diameter	Diameter of Circle of Holes	kg/ piece
	in mm	in mm	in mm	in mm	in mm	in mm	in mm		in mm	in mm	
1/2	0.840	4.750	0.900	0.880	1.250	0.120	1.500	4	0.880	3.250	1.71
	21.30	120.6	22.90	22.30	31.70	3.000	38.10		22.30	82.50	
3/4	1.050	5.120	1.110	1.000	1.380	0.120	1.750	4	0.880	3.500	2.30
	26.70	130.0	28.20	25.40	35.00	3.000	44.40		22.30	88.90	
1	1.315	5.880	1.380	1.120	1.620	0.120	2.060	4	1.000	4.000	3.40
	33.40	149.3	35.10	28.40	41.10	3.000	52.30		25.40	101.6	
1 1/4	1.660	6.250	1.720	1.120	1.620	0.190	2.500	4	1.000	4.380	3.85
	42.20	158.7	43.70	28.40	41.10	4.800	63.50		25.40	111.2	
1 1/2	1.900	7.000	1.970	1.250	1.750	0.250	2.750	4	1.120	4.880	5.28
	48.30	177.8	50.00	31.70	44.40	6.400	69.85		28.40	123.9	
2	2.375	8.500	2.460	1.500	2.250	0.310	4.120	8	1.000	6.500	9.78
	60.30	215.9	62.50	38.10	57.15	7.900	104.6		25.40	165.1	
2 1/2	2.875	9.620	2.970	1.620	2.500	0.310	4.880	8	1.120	7.500	13.6
	73.00	244.3	75.40	41.10	63.50	7.900	123.9		28.40	190.5	
3	3.500	9.500	3.600	1.500	2.120	0.380	5.000	8	1.000	7.500	11.3
	88.90	241.3	91.40	38.10	53.80	9.700	127.0		25.40	190.5	
4	4.500	11.50	4.600	1.750	2.750	0.440	6.250	8	1.250	9.250	19.2
	114.3	292.1	116.8	44.40	69.85	11.20	158.7		31.70	234.9	
5	5.563	13.75	5.690	2.000	3.120	0.440	7.500	8	1.380	11.00	31.20
	141.3	349.2	114.5	50.80	79.25	11.20	190.5		35.00	279.4	
6	6.625	15.00	6.750	2.190	3.380	0.500	9.250	12	1.250	12.50	40.50
	168.3	381.0	171.5	55.60	85.80	12.70	234.9		31.70	317.5	
8	8.625	18.50	8.750	2.500	4.500	0.500	11.75	12	1.500	15.50	71.5
	219.1	469.9	222.3	63.50	114.3	12.70	298.4		38.10	393.7	
10	10.75	21.50	10.92	2.750	5.000	0.500	14.50	16	1.500	18.50	104
	273.0	546.1	277.4	69.85	127.0	12.70	368.3		38.10	469.9	
12	12.75	24.00	12.92	3.120	5.620	0.500	16.50	20	1.500	21.00	139
	323.8	609.6	328.2	79.25	142.7	12.70	419.1		38.10	533.4	
14	14.00	25.25	14.18	3.380	6.120	0.500	17.75	20	1.620	22.00	161
	355.6	641.3	360.2	85.80	155.4	12.70	450.8		41.10	558.8	
16	16.00	27.75	16.19	3.500	6.500	0.500	20.00	20	1.750	24.25	194
	406.4	704.8	411.2	88.90	165.1	12.70	508.0		44.40	615.9	
18	18.00	31.00	18.20	4.000	7.500	0.500	22.25	20	2.000	27.00	267
	457.2	787.4	462.3	101.6	190.5	12.70	565.1		50.80	685.8	
20	20.00	33.75	20.25	4.250	8.250	0.500	24.50	20	2.120	29.50	334
	508.0	857.2	514.4	107.9	209.5	12.70	622.3		53.80	749.3	
24	24.00	41.00	24.25	50.50	10.50	0.500	29.50	20	2.620	35.50	618
	609.6	1041.4	616.0	139.7	266.7	12.70	749.3		66.55	901.7	

Notes

- Weights are based on manufacturer's data and are approximate.
- For tolerances see page 8-4.

Lap Joint Flanges - ANSI B16.5



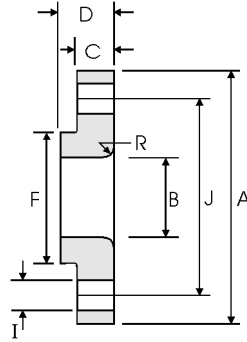
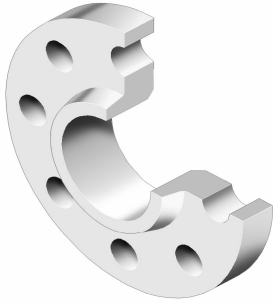
Class 1500 lb

Nominal Pipe Size	Pipe	Flange Data				Lap	Hub	Drilling Data			Weight
		A	B	C	D	R	F	H	I	J	
	Outside Diameter	Overall Diameter	Inside Diameter	Flange Thickness min	Overall Length	Lap Radius	Hub Diameter	Number of Holes	Bolt Hole Diameter	Diameter of Circle of Holes	kg/ piece
	in mm	in mm	in mm	in mm	in mm	in mm	in mm		in mm	in mm	
1/2	0.840	4.750	0.900	0.880	1.250	0.120	1.500	4	0.880	3.250	1.71
	21.30	120.6	22.90	22.30	31.70	3.000	38.10		22.30	82.50	
3/4	1.050	5.120	1.110	1.000	1.380	0.120	1.750	4	0.880	3.500	2.30
	26.70	130.0	28.20	25.40	35.00	3.000	44.40		22.30	88.90	
1	1.315	5.880	1.380	1.120	1.620	0.120	2.060	4	1.000	4.000	3.40
	33.40	149.3	35.10	28.40	41.10	3.000	52.30		25.40	101.6	
1 1/4	1.660	6.250	1.720	1.120	1.620	0.190	2.500	4	1.000	4.380	3.85
	42.20	158.7	43.70	28.40	41.10	4.800	63.50		25.40	111.2	
1 1/2	1.900	7.000	1.970	1.250	1.750	0.250	2.750	4	1.120	4.880	5.28
	48.30	177.8	50.00	31.70	44.40	6.400	69.85		28.40	123.9	
2	2.375	8.500	2.460	1.500	2.250	0.310	4.120	8	1.000	6.500	9.78
	60.30	215.9	62.50	38.10	57.15	7.900	104.6		25.40	165.1	
2 1/2	2.875	9.620	2.970	1.620	2.500	0.310	4.880	8	1.120	7.500	13.6
	73.00	244.3	75.40	41.10	63.50	7.900	123.9		28.40	190.5	
3	3.500	10.50	3.600	1.880	2.880	0.380	5.250	8	1.250	8.000	17.8
	88.90	266.7	91.40	47.70	73.15	9.700	133.3		31.70	203.2	
4	4.500	12.25	4.600	2.120	3.560	0.440	6.380	8	1.380	9.500	27.5
	114.3	311.1	116.8	53.80	90.40	11.20	162.0		35.00	241.3	
5	5.563	14.75	5.690	2.880	4.120	0.440	7.750	8	1.620	11.50	51.5
	141.3	374.6	114.5	73.15	104.6	11.20	196.8		41.10	292.1	
6	6.625	15.50	6.750	3.250	4.690	0.500	9.000	12	1.500	12.50	62.0
	168.3	399.7	171.5	82.50	119.1	12.70	228.6		38.10	317.5	
8	8.625	19.00	8.750	3.620	5.620	0.500	11.50	12	1.750	15.50	105
	219.1	482.6	222.3	91.90	142.7	12.70	292.1		44.40	393.7	
10	10.75	23.00	10.92	4.250	7.000	0.500	14.50	12	2.000	19.00	179
	273.0	584.2	277.4	107.9	177.8	12.70	368.3		50.80	482.6	
12	12.75	26.50	12.92	4.880	8.620	0.500	17.75	16	2.120	22.50	269
	323.8	673.1	328.2	123.9	218.9	12.70	450.8		53.80	571.5	
14	14.00	29.50	14.18	5.250	9.500	0.500	19.50	16	2.380	25.00	365
	355.6	749.3	360.2	133.3	241.3	12.70	495.3		60.45	635.0	
16	16.00	32.50	16.19	5.750	10.25	0.500	21.75	16	2.620	27.75	459
	406.4	825.5	411.2	146.0	260.3	12.70	552.4		66.55	704.8	
18	18.00	36.00	18.20	6.380	10.88	0.500	23.50	16	2.880	30.50	598
	457.2	914.4	462.3	162.0	276.3	12.70	596.9		73.15	774.7	
20	20.00	38.75	20.25	7.000	11.50	0.500	25.25	16	3.120	32.75	712
	508.0	984.2	514.4	177.8	292.1	12.70	641.3		79.25	831.8	
24	24.00	46.00	24.25	8.000	13.00	0.500	30.00	16	3.620	39.00	1090
	609.6	1168.4	616.0	203.2	330.2	12.70	762.0		91.90	990.6	

Notes

- Weights are based on manufacturer's data and are approximate.
- For tolerances see page 8-4.

Lap Joint Flanges - ANSI B16.5



Class 2500 lb

Nominal Pipe Size	Pipe	Flange Data				Lap	Hub	Drilling Data			Weight
		A	B	C	D	R	F	H	I	J	
	Outside Diameter	Overall Diameter	Inside Diameter	Flange Thickness min	Overall Length	Lap Radius	Hub Diameter	Number of Holes	Bolt Hole Diameter	Diameter of Circle of Holes	kg/ piece
	in mm	in mm	in mm	in mm	in mm	in mm	in mm		in mm	in mm	
1/2	0.840	5.255	0.900	1.190	1.560	0.120	1.690	4	0.880	3.500	2.92
	21.30	133.4	22.90	30.20	39.60	3.000	42.90		22.40	88.90	
3/4	1.050	5.500	1.110	1.250	1.690	0.120	2.000	4	0.880	3.750	3.40
	26.70	139.7	28.20	31.75	42.90	3.000	50.80		22.40	95.30	
1	1.315	6.250	1.380	1.380	1.880	0.120	2.250	4	1.000	4.250	4.77
	33.40	158.8	35.10	35.10	47.80	3.000	57.15		25.40	108.0	
1 1/4	1.660	7.250	1.720	1.500	2.060	0.190	2.880	4	1.120	5.120	7.08
	42.20	184.2	43.70	38.10	52.30	4.800	73.15		28.40	130.0	
1 1/2	1.900	8.000	1.970	1.750	2.380	0.250	3.120	4	1.250	5.750	9.93
	48.30	203.2	50.00	44.50	60.45	6.400	79.25		31.75	146.1	
2	2.375	9.250	2.460	2.000	2.750	0.310	3.750	8	1.120	6.750	14.7
	60.30	235.0	62.50	50.80	69.85	7.900	95.30		28.40	171.5	
2 1/2	2.875	10.50	2.970	2.250	3.120	0.310	4.500	8	1.250	7.750	21.3
	73.00	266.7	75.40	57.15	79.25	7.900	114.3		31.75	196.9	
3	3.500	12.00	3.600	2.620	3.620	0.380	5.250	8	1.380	9.000	32.3
	88.90	304.8	91.40	66.55	91.90	9.700	133.4		35.10	228.6	
4	4.500	14.00	4.600	3.000	4.250	0.440	6.500	8	1.620	10.75	52.5
	114.3	355.6	116.8	76.20	108.0	11.20	165.1		41.10	273.1	
5	5.563	16.50	5.690	3.620	5.120	0.440	8.000	8	1.880	12.75	82.6
	141.3	419.1	114.5	91.90	130.0	11.20	203.2		47.80	323.9	
6	6.625	19.00	6.750	4.250	6.000	0.500	9.250	8	2.120	14.50	127
	168.3	482.6	171.5	108.0	152.4	12.70	235.0		53.80	368.3	
8	8.625	21.75	8.750	5.000	7.000	0.500	12.00	12	2.120	17.25	186
	219.1	552.5	222.3	127.0	177.8	12.70	304.8		53.80	438.2	
10	10.75	26.50	10.92	6.500	9.000	0.500	14.75	12	2.620	21.25	352
	273.0	673.1	277.4	165.1	228.6	12.70	374.7		66.55	539.8	
12	12.75	30.00	12.92	7.250	10.00	0.500	17.38	12	2.880	24.38	501
	323.8	762.0	328.2	184.2	254.0	12.70	441.5		73.15	619.3	

Notes

- Weights are based on manufacturer's data and are approximate.
- For tolerances see page 8-4.