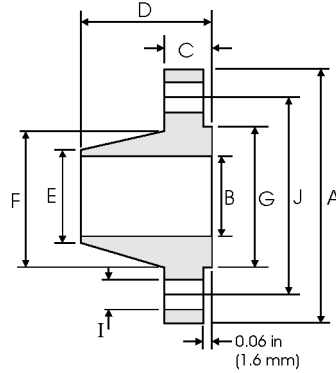


# Weld Neck Flanges - ANSI B16.5



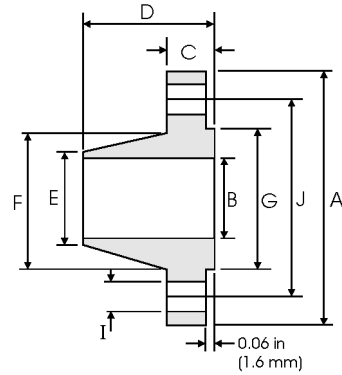
## Class 150 lb

Pipe		Flange Data				Hub Data		Raised Face	Drilling Data			Weight
Nominal Pipe Size		A	B	C	D	E	F	G	H	I	J	
	Outside Diameter	Overall Diameter	Inside Diameter	Flange Thickness min	Overall Length	Diameter at Weld Bevel	Hub Diameter	Face Diameter	Number of Holes	Bolt Hole Diameter	Diameter of Circle of Holes	kg/ piece
	in mm	in mm	in mm	in mm	in mm	in mm	in mm	in mm				
1/2	0.840	3.500	0.620	0.440	1.880	0.840	1.190	1.380	4	0.620	2.380	0.48
	21.30	88.90	15.70	11.20	47.80	21.30	30.20	35.00				
3/4	1.050	3.880	0.820	0.500	2.060	1.050	1.500	1.690	4	0.620	2.750	0.71
	26.70	98.60	20.80	12.70	52.30	26.70	38.10	42.90				
1	1.315	4.250	1.050	0.560	2.190	1.320	1.940	2.000	4	0.620	3.120	1.01
	33.40	108.0	26.70	14.20	55.60	33.50	49.30	50.80				
1 1/4	1.660	4.620	1.380	0.620	2.250	1.660	2.310	2.500	4	0.620	3.500	1.33
	42.20	117.3	35.10	15.70	57.15	42.20	58.70	63.50				
1 1/2	1.900	5.000	1.610	0.690	2.440	1.900	2.560	2.880	4	0.620	3.880	1.72
	48.30	127.0	40.90	17.50	62.00	48.30	65.00	73.15				
2	2.375	6.000	2.070	0.750	2.500	2.380	3.060	3.620	4	0.750	4.750	2.58
	60.30	152.4	52.60	19.10	63.50	60.45	77.70	91.90				
2 1/2	2.875	7.000	2.470	0.880	2.750	2.880	3.560	4.120	4	0.750	5.500	4.11
	73.00	177.8	62.70	22.40	69.85	73.15	90.40	104.6				
3	3.500	7.500	3.070	0.940	2.750	3.500	4.250	5.000	4	0.750	6.000	4.92
	88.90	190.5	78.00	23.90	69.85	88.90	108.0	127.0				
3 1/2	4.000	8.500	3.550	0.940	2.810	4.000	4.810	5.500	8	0.750	7.000	6.08
	101.6	215.9	90.20	23.90	71.40	101.6	122.2	139.7				
4	4.500	9.000	4.030	0.940	3.000	4.500	5.310	6.190	8	0.750	7.500	6.84
	114.3	228.6	102.4	23.90	76.20	114.3	134.9	157.2				
5	5.563	10.00	5.050	0.940	3.500	5.560	6.440	7.310	8	0.880	8.500	8.56
	141.3	254.0	128.3	23.90	88.90	141.2	163.6	185.7				
6	6.625	11.00	6.070	1.000	3.500	6.630	7.560	8.500	8	0.880	9.500	10.6
	168.3	279.4	154.2	25.40	88.90	168.4	192.0	215.9				
8	8.625	13.50	7.980	1.120	4.000	8.630	9.690	10.62	8	0.880	11.75	17.6
	219.1	342.9	202.7	28.40	101.6	219.2	246.1	269.7				
10	10.75	16.00	10.02	1.190	4.000	10.75	12.00	12.75	12	1.000	14.25	24.0
	273.0	406.4	254.5	30.20	101.6	273.0	304.8	323.8				
12	12.75	19.00	12.00	1.250	4.500	12.75	14.38	15.00	12	1.000	17.00	36.5
	323.8	482.6	304.8	31.75	114.3	323.8	365.3	381.0				
14	14.00	21.00		1.380	5.000	14.00	15.75	16.25	12	1.120	18.75	48.4
	355.6	533.4		35.10	127.0	355.6	400.1	412.7				
16	16.00	23.50		1.440	5.000	16.00	18.00	18.50	16	1.120	21.25	60.6
	406.4	596.9		36.60	127.0	406.4	475.2	469.9				
18	18.00	25.00		1.560	5.500	18.00	19.88	21.00	16	1.250	22.75	68.3
	457.2	635.0		39.60	139.7	457.2	505.0	533.4				
20	20.00	27.50		1.690	5.690	20.00	22.00	23.00	20	1.250	25.00	84.5
	508.0	698.5		42.90	144.5	508.0	558.8	584.2				
24	24.00	32.00		1.880	6.000	24.00	26.12	27.25	20	1.380	29.50	115
	609.6	812.8		47.80	152.4	609.6	663.4	692.1				

Notes

- Dimension B corresponds to the pipe inside diameter. Values quoted assume 40S/Standard wall thickness.
- Weights are based on manufacturer's data and are approximate.
- Flat face flanges may be provided at full thickness, C, or with raised face removed (the latter is nonstandard).
- For ring joint facings see page 8-6. For weld end bevel see page 8-5.
- For tolerances see page 8-4.

# Weld Neck Flanges - ANSI B16.5



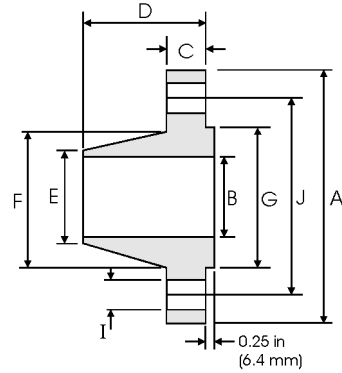
## Class 300 lb

Nominal Pipe Size	Pipe		Flange Data				Hub Data		Raised Face	Drilling Data			Weight
	Outside Diameter	Overall Diameter	Inside Diameter	Flange Thickness min	Overall Length	Diameter at Weld Bevel	Hub Diameter	Face Diameter	Number of Holes	Bolt Hole Diameter	Diameter of Circle of Holes	kg/ piece	
													A
1/2	0.840 21.30	3.750 95.20	0.620 15.70	0.560 14.20	2.060 52.30	0.840 21.30	1.500 38.10	1.380 35.00	4	0.620 15.70	2.620 66.55	0.75	
3/4	1.050 26.70	4.620 117.3	0.820 20.80	0.620 15.70	2.250 57.15	1.050 26.70	1.880 47.70	1.690 42.90	4	0.750 19.00	3.250 82.50	1.26	
1	1.315 33.40	4.880 123.9	1.050 26.70	0.690 17.50	2.440 62.00	1.320 33.50	2.120 53.80	2.000 50.80	4	0.750 19.00	3.500 88.90	1.52	
1 1/4	1.660 42.20	5.250 133.3	1.380 35.10	0.750 19.00	2.560 65.00	1.660 42.20	2.500 63.50	2.500 63.50	4	0.750 19.00	3.880 98.50	2.03	
1 1/2	1.900 48.30	6.120 155.4	1.610 40.90	0.810 20.60	2.690 68.30	1.900 48.30	2.750 69.85	2.880 73.15	4	0.880 22.30	4.500 114.3	2.89	
2	2.375 60.30	6.500 165.1	2.070 52.60	0.880 22.30	2.750 69.85	2.380 60.45	3.310 84.00	3.620 91.90	8	0.750 19.00	5.000 127.0	3.40	
2 1/2	2.875 73.00	7.500 190.5	2.470 62.70	1.000 25.40	3.000 76.20	2.880 73.15	3.940 100.0	4.120 104.6	8	0.880 22.30	5.880 149.3	5.17	
3	3.500 88.90	8.250 209.5	3.070 78.00	1.120 28.40	3.120 79.25	3.500 88.90	4.620 117.3	5.000 127.0	8	0.880 22.30	6.620 168.1	6.93	
3 1/2	4.000 101.6	9.000 228.6	3.550 90.20	1.190 30.20	3.190 81.00	4.000 101.6	5.250 133.3	5.500 139.7	8	0.880 22.30	7.250 184.1	8.67	
4	4.500 114.3	10.00 254.0	4.030 102.4	1.250 31.70	3.380 85.80	4.500 114.3	5.750 146.0	6.190 157.2	8	0.880 22.30	7.880 200.1	11.2	
5	5.563 141.3	11.00 279.4	5.050 128.3	1.380 35.00	3.880 98.50	5.560 141.2	7.000 177.8	7.310 185.7	8	0.880 22.30	9.250 234.9	15.1	
6	6.625 168.3	12.50 317.5	6.070 154.2	1.440 36.50	3.880 98.50	6.630 168.4	8.120 206.2	8.500 215.9	12	0.880 22.30	10.62 269.7	19.1	
8	8.625 219.1	15.00 381.0	7.980 202.7	1.620 41.10	4.380 111.2	8.630 219.2	10.25 260.3	10.62 269.7	12	1.000 25.40	13.00 330.2	29.9	
10	10.75 273.0	17.50 444.5	10.02 254.5	1.880 47.70	4.620 117.3	10.75 273.0	12.62 320.5	12.75 323.8	16	1.120 28.40	15.25 387.3	42.7	
12	12.75 323.8	20.50 520.7	12.00 304.8	2.000 50.80	5.120 130.0	12.75 323.8	14.75 374.6	15.00 381.0	16	1.250 31.70	17.75 450.8	61.8	
14	14.00 355.6	23.00 584.2	To be specified by Purchaser	2.120 53.80	5.620 142.7	14.00 355.6	16.75 425.4	16.25 412.7	20	1.250 31.70	20.25 514.3	85.8	
16	16.00 406.4	25.50 647.7		2.250 57.15	5.750 146.0	16.00 406.4	19.00 482.6	18.50 469.9	20	1.380 35.00	22.50 571.5	106	
18	18.00 457.2	28.00 711.2		2.380 60.45	6.250 158.7	18.00 457.2	21.00 533.4	21.00 533.4	24	1.380 35.00	24.75 628.6	131	
20	20.00 508.0	30.50 774.7		2.500 63.50	6.380 162.0	20.00 508.0	23.12 587.2	23.00 584.2	24	1.380 35.00	27.00 685.8	158	
24	24.00 609.6	36.00 914.4		2.750 69.85	6.620 168.1	24.00 609.6	27.62 701.5	27.25 692.1	24	1.620 41.10	32.00 812.8	230	

### Notes

- Dimension B corresponds to the pipe inside diameter. Values quoted assume 40S/Standard wall thickness.
- Weights are based on manufacturer's data and are approximate.
- Flat face flanges may be provided at full thickness, C, or with raised face removed (the latter is nonstandard).
- For ring joint facings see page 8-6. For weld end bevel see page 8-5.
- For tolerances see page 8-4.

# Weld Neck Flanges - ANSI B16.5



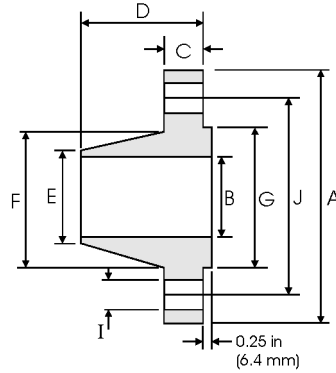
## Class 600 lb

Nominal Pipe Size	Pipe		Flange Data				Hub Data		Raised Face	Drilling Data			Weight
	Outside Diameter	Overall Diameter	A	B	C	D	E	F	G	H	I	J	kg/ piece
1/2	0.840	3.750	To be specified by Purchaser	0.560	2.060	0.840	1.500	1.380	4	0.620	2.620	0.87	
	21.30	95.30		14.20	52.30	21.30	38.10	35.00		15.70	66.55		
3/4	1.050	4.620	0.620	2.250	1.050	1.880	1.690	4	0.750	3.250	1.45		
	26.70	117.3	15.70	57.15	26.70	47.80	42.90		19.10	82.60			
1	1.315	4.880	0.690	2.440	1.320	2.120	2.000	4	0.750	3.500	1.76		
	33.40	124.0	17.50	62.00	33.50	53.80	50.80		19.10	88.90			
1 1/4	1.660	5.250	0.810	2.620	1.660	2.500	2.500	4	0.750	3.880	2.49		
	42.20	133.4	20.60	66.55	42.20	63.50	63.50		19.10	98.60			
1 1/2	1.900	6.120	0.880	2.750	1.900	2.750	2.880	4	0.880	4.500	3.49		
	48.30	155.4	22.40	69.85	48.30	69.85	73.15		22.40	114.3			
2	2.375	6.500	1.000	2.880	2.380	3.310	3.620	8	0.750	5.000	4.36		
	60.30	165.1	25.40	73.15	60.45	84.10	91.90		19.10	127.0			
2 1/2	2.875	7.500	1.120	3.120	2.880	3.940	4.120	8	0.880	5.880	6.43		
	73.00	190.5	28.40	79.25	73.15	100.1	104.6		22.40	149.4			
3	3.500	8.250	1.250	3.250	3.500	4.620	5.000	8	0.880	6.620	8.53		
	88.90	209.6	31.75	82.60	88.90	117.3	127.0		22.40	168.1			
3 1/2	4.000	9.000	1.380	3.380	4.000	5.250	5.500	8	1.000	7.250	10.7		
	101.6	228.6	35.10	85.90	101.6	133.4	139.7		25.40	184.2			
4	4.500	10.75	1.500	4.000	4.500	6.000	6.190	8	1.000	8.500	17.4		
	114.3	273.1	38.10	101.6	114.3	152.4	157.2		25.40	215.9			
5	5.563	13.00	1.750	4.500	5.560	7.440	7.310	8	1.120	10.50	29.2		
	141.3	330.2	44.50	114.3	141.2	189.0	185.7		28.40	266.7			
6	6.625	14.00	1.880	4.620	6.630	8.750	8.500	12	1.120	11.50	34.9		
	168.3	355.6	47.80	117.3	168.4	222.3	215.9		28.40	292.1			
8	8.625	16.50	2.190	5.250	8.630	10.75	10.62	12	1.250	13.75	53.9		
	219.1	419.1	55.60	133.4	219.2	273.1	269.7		31.75	349.3			
10	10.75	20.00	2.500	6.000	10.75	13.50	12.75	16	1.380	17.00	86.5		
	273.0	508.0	63.50	152.4	273.0	342.9	323.8		35.10	431.8			
12	12.75	22.00	2.620	6.120	12.75	15.75	15.00	20	1.380	19.25	103		
	323.8	558.8	66.55	155.4	323.8	400.1	381.0		35.10	489.0			
14	14.00	23.75	2.750	6.500	14.00	17.00	16.25	20	1.500	20.75	122		
	355.6	603.3	69.85	165.1	355.6	431.8	412.7		38.10	527.1			
16	16.00	27.00	3.000	7.000	16.00	19.50	18.50	20	1.620	23.75	170		
	406.4	685.8	76.20	177.8	406.4	495.3	469.9		41.10	603.3			
18	18.00	29.25	3.250	7.250	18.00	21.50	21.00	20	1.750	25.75	204		
	457.2	743.0	82.60	184.2	457.2	546.1	533.4		44.50	654.1			
20	20.00	32.00	3.500	7.500	20.00	24.00	23.00	24	1.750	28.50	254		
	508.0	812.8	88.90	190.5	508.0	609.6	584.2		44.50	723.9			
24	24.00	37.00	4.000	8.000	24.00	28.25	27.25	24	2.000	33.00	358		
	609.6	939.8	101.6	203.2	609.6	717.6	692.1		50.80	838.2			

Notes

- Dimension B corresponds to the pipe inside diameter. Values quoted assume 40S/Standard wall thickness.
- Weights are based on manufacturer's data and are approximate.
- For ring joint facings see page 8-6. For weld end bevel see page 8-5.
- For tolerances see page 8-4.

# Weld Neck Flanges - ANSI B16.5



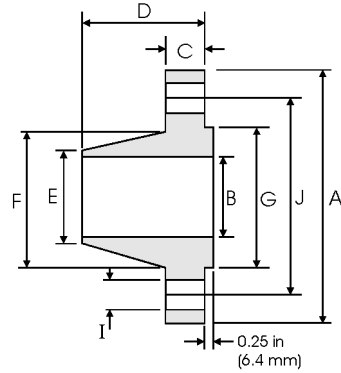
## Class 900 lb

Pipe		Flange Data				Hub Data		Raised Face	Drilling Data			Weight
Nominal Pipe Size		<b>A</b>	<b>B</b>	<b>C</b>	<b>D</b>	<b>E</b>	<b>F</b>	<b>G</b>	<b>H</b>	<b>I</b>	<b>J</b>	
	Outside Diameter	Overall Diameter	Inside Diameter	Flange Thickness min	Overall Length	Diameter at Weld Bevel	Hub Diameter	Face Diameter	Number of Holes	Bolt Hole Diameter	Diameter of Circle of Holes	kg/ piece
	in mm	in mm	in mm	in mm	in mm	in mm	in mm	in mm		in mm	in mm	
1/2	0.840	4.750	To be specified by Purchaser	0.880	2.380	0.840	1.500	1.380	4	0.880	3.250	1.87
	21.30	120.6		22.30	60.45	21.30	38.10	35.00		22.30	82.50	
3/4	1.050	5.120		1.000	2.750	1.050	1.750	1.690	4	0.880	3.500	2.56
	26.70	130.0		25.40	69.85	26.70	44.00	42.90		22.30	88.90	
1	1.315	5.880		1.120	2.880	1.320	2.060	2.000	4	1.000	4.000	3.74
	33.40	149.3		28.40	73.15	33.50	52.30	50.80		25.40	101.6	
1 1/4	1.660	6.250		1.120	2.880	1.660	2.500	2.500	4	1.000	4.380	4.33
	42.20	158.7		28.40	73.15	42.20	63.50	63.50		25.40	111.2	
1 1/2	1.900	7.000		1.250	3.250	1.900	2.750	2.880	4	1.120	4.880	5.94
	48.30	177.8		31.70	82.50	48.30	69.85	73.15		28.40	123.9	
2	2.375	8.500		1.500	4.000	2.380	4.120	3.620	8	1.000	6.500	10.8
	60.30	215.9		38.10	101.6	60.45	104.6	91.90		25.40	165.1	
2 1/2	2.875	9.620		1.620	4.120	2.880	4.880	4.120	8	1.120	7.500	15.0
	73.00	244.3		41.10	104.6	73.15	123.9	104.6		28.40	190.5	
3	3.500	9.500		1.500	4.000	3.500	5.000	5.000	8	1.000	7.500	13.7
	88.90	241.3		38.10	101.6	88.90	127.0	127.0		25.40	190.5	
4	4.500	11.50		1.750	4.500	4.500	6.250	6.190	8	1.250	9.250	22.5
	114.3	292.1		44.40	114.3	114.3	158.7	157.2		31.70	234.9	
5	5.563	13.75		2.000	5.000	5.560	7.500	7.310	8	1.380	11.00	37.4
	141.3	349.2		50.80	127.0	141.2	190.5	185.7		35.00	279.4	
6	6.625	15.00	2.190	5.500	6.630	9.250	8.500	12	1.250	12.50	47.7	
	168.3	381.0	55.60	139.7	168.4	234.9	215.9		31.70	317.5		
8	8.625	18.50	2.500	6.380	8.630	11.75	10.62	12	1.500	15.50	81.3	
	219.1	469.9	63.50	162.0	219.2	298.4	269.7		38.10	393.7		
10	10.75	21.50	2.750	7.250	10.75	14.50	12.75	16	1.500	18.50	119	
	273.0	546.1	69.85	184.1	273.0	368.3	323.8		38.10	469.9		
12	12.75	24.00	3.120	7.880	12.75	16.50	15.00	20	1.500	21.00	157	
	323.8	609.6	79.25	200.1	323.8	419.1	381.0		38.10	533.4		
14	14.00	25.25	3.380	8.380	14.00	17.75	16.25	20	1.620	22.00	180	
	355.6	641.3	85.80	212.8	355.6	450.8	412.7		41.10	558.8		
16	16.00	27.75	3.500	8.500	16.00	20.00	18.50	20	1.750	24.25	217	
	406.4	704.8	88.90	215.9	406.4	508.0	469.9		44.40	615.9		
18	18.00	31.00	4.000	9.000	18.00	22.25	21.00	20	2.000	27.00	292	
	457.2	787.4	101.6	228.6	457.2	565.1	533.4		50.80	685.8		
20	20.00	33.75	4.250	9.750	20.00	24.50	23.00	20	2.120	29.50	362	
	508.0	857.2	107.9	247.6	508.0	622.3	584.2		53.80	749.3		
24	24.00	41.00	5.500	11.50	24.00	29.50	27.25	20	2.620	35.50	665	
	609.6	1041.4	139.7	292.1	609.6	749.3	692.1		66.55	901.7		

Notes

- Dimension B corresponds to the pipe inside diameter. Values quoted assume 40S/Standard wall thickness.
- Weights are based on manufacturer's data and are approximate.
- For ring joint facings see page 8-6. For weld end bevel see page 8-5.
- For tolerances see page 8-4.

# Weld Neck Flanges - ANSI B16.5



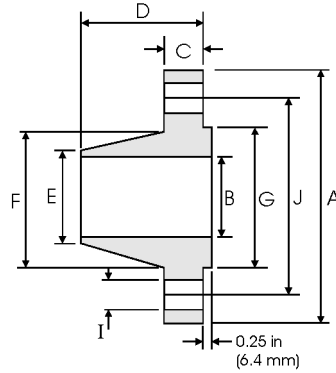
## Class 1500 lb

Nominal Pipe Size	Pipe		Flange Data				Hub Data		Raised Face	Drilling Data			Weight
	Outside Diameter	Overall Diameter	A	B	C	D	E	F	G	H	I	J	kg/ piece
1/2	0.840 21.30	4.750 120.6	To be specified by Purchaser	0.880 22.30	2.380 60.45	0.840 21.30	1.500 38.10	1.380 35.00	4	0.880 22.30	3.250 82.50	1.87	
3/4	1.050 26.70	5.120 130.0		1.000 25.40	2.750 69.85	1.050 26.70	1.750 44.00	1.690 42.90	4	0.880 22.30	3.500 88.90	2.56	
1	1.315 33.40	5.880 149.3		1.120 28.40	2.880 73.15	1.320 33.50	2.060 52.30	2.000 50.80	4	1.000 25.40	4.000 101.6	3.74	
1 1/4	1.660 42.20	6.250 158.7		1.120 28.40	2.880 73.15	1.660 42.20	2.500 63.50	2.500 63.50	4	1.000 25.40	4.380 111.2	4.33	
1 1/2	1.900 48.30	7.000 177.8		1.250 31.70	3.250 82.50	1.900 48.30	2.750 69.85	2.880 73.15	4	1.120 28.40	4.880 123.9	5.94	
2	2.375 60.30	8.500 215.9		1.500 38.10	4.000 101.6	2.380 60.45	4.120 104.6	3.620 91.90	8	1.000 25.40	6.500 165.1	10.8	
2 1/2	2.875 73.00	9.620 244.3		1.620 41.10	4.120 104.6	2.880 73.15	4.880 123.9	4.120 104.6	8	1.120 28.40	7.500 190.5	15.0	
3	3.500 88.90	10.50 266.7		1.880 47.70	4.620 117.3	3.500 88.90	5.250 133.3	5.000 127.0	8	1.250 31.70	8.000 203.2	19.9	
4	4.500 114.3	12.25 311.1		2.120 53.80	4.880 123.9	4.500 114.3	6.380 162.0	6.190 157.2	8	1.380 35.00	9.500 241.3	29.9	
5	5.563 141.3	14.75 374.6		2.880 73.15	6.120 155.4	5.560 141.2	7.750 196.8	7.310 185.7	8	1.620 41.10	11.50 292.1	55.4	
6	6.625 168.3	15.50 393.7		3.250 82.50	6.750 171.4	6.630 168.4	9.000 228.6	8.500 215.9	12	1.500 38.10	12.50 317.5	68.4	
8	8.625 219.1	19.00 482.6		3.620 91.90	8.380 212.8	8.630 219.2	11.50 292.1	10.62 269.7	12	1.750 44.40	15.50 393.7	117	
10	10.75 273.0	23.00 584.2		4.250 107.9	10.00 254.0	10.75 273.0	14.50 368.3	12.75 323.8	12	2.000 50.80	19.00 482.6	194	
12	12.75 323.8	26.50 673.1		4.880 123.9	11.12 282.4	12.75 323.8	17.75 450.8	15.00 381.0	16	2.120 53.80	22.50 571.5	288	
14	14.00 355.6	29.50 749.3		5.250 133.3	11.75 298.4	14.00 355.6	19.50 495.3	16.25 412.7	16	2.380 60.45	25.00 635.0	380	
16	16.00 406.4	32.50 825.5		5.750 146.0	12.25 311.1	16.00 406.4	21.75 552.4	18.50 469.9	16	2.620 66.55	27.75 704.8	485	
18	18.00 457.2	36.00 914.4		6.380 162.0	12.88 327.1	18.00 457.2	23.50 596.9	21.00 533.4	16	2.880 73.15	30.50 774.7	644	
20	20.00 508.0	38.75 984.2		7.000 177.8	14.00 355.6	20.00 508.0	25.25 641.3	23.00 584.2	16	3.120 79.25	32.75 831.8	775	
24	24.00 609.6	46.00 1168.4		8.000 203.2	16.00 406.4	24.00 609.6	30.00 762.0	27.25 692.1	16	3.620 91.90	39.00 990.6	1232	



### Notes

- Dimension B corresponds to the pipe inside diameter. Values quoted assume 40S/Standard wall thickness.
- Weights are based on manufacturer's data and are approximate.
- For ring joint facings see page 8-6. For weld end bevel see page 8-5.
- For tolerances see page 8-4.

# Weld Neck Flanges - ANSI B16.5



## Class 2500 lb

Nominal Pipe Size	Pipe		Flange Data				Hub Data		Raised Face	Drilling Data			Weight
		<b>A</b>	<b>B</b>	<b>C</b>	<b>D</b>	<b>E</b>	<b>F</b>	<b>G</b>	<b>H</b>	<b>I</b>	<b>J</b>		
	Outside Diameter	Overall Diameter	Inside Diameter	Flange Thickness min	Overall Length	Diameter at Weld Bevel	Hub Diameter	Face Diameter	Number of Holes	Bolt Hole Diameter	Diameter of Circle of Holes	kg/ piece	
	in mm	in mm	in mm	in mm	in mm	in mm	in mm	in mm		in mm	in mm		
1/2	0.840	5.250	To be specified by Purchaser	1.190	2.880	0.840	1.690	1.380	4	0.880	3.500	3.12	
	21.30	133.4		30.20	73.15	21.30	42.90	35.00		22.40	88.90		
3/4	1.050	5.500		1.250	3.120	1.050	2.000	1.690	4	0.880	3.750	3.70	
	26.70	139.7		31.75	79.25	26.70	50.80	42.90		22.40	95.30		
1	1.315	6.250		1.380	3.500	1.320	2.250	2.000	4	1.000	4.250	5.24	
	33.40	158.8		35.10	88.90	33.50	57.15	50.80		25.40	108.0		
1 1/4	1.660	7.250		1.500	3.750	1.660	2.880	2.500	4	1.120	5.120	7.74	
	42.20	184.2		38.10	95.30	42.20	73.15	63.50		28.40	130.0		
1 1/2	1.900	8.000		1.750	4.380	1.900	3.120	2.880	4	1.250	5.750	10.9	
	48.30	203.2		44.50	111.3	48.30	79.25	73.15		31.75	146.1		
2	2.375	9.250		2.000	5.000	2.380	3.750	3.620	8	1.120	6.750	16.2	
	60.30	235.0		50.80	127.0	60.45	95.30	91.90		28.40	171.5		
2 1/2	2.875	10.50	2.250	5.620	2.880	4.500	4.120	8	1.250	7.750	23.7		
	73.00	266.7	57.15	142.7	73.15	114.3	104.6		31.75	196.9			
3	3.500	12.00	2.620	6.620	3.500	5.250	5.000	8	1.380	9.000	36.2		
	88.90	304.8	66.55	168.1	88.90	133.4	127.0		35.10	228.6			
4	4.500	14.00	3.000	7.500	4.500	6.500	6.190	8	1.620	10.75	55.3		
	114.3	355.6	76.20	190.5	114.3	165.1	157.2		41.10	273.1			
5	5.563	16.50	3.620	9.000	5.560	8.000	7.310	8	1.880	12.75	92.5		
	141.3	419.1	91.90	228.6	141.2	203.2	185.7		47.80	323.9			
6	6.625	19.00	4.250	10.75	6.630	9.250	8.500	8	2.120	14.50	143		
	168.3	482.6	108.0	273.1	168.4	235.0	215.9		53.80	368.3			
8	8.625	21.75	5.000	12.50	8.630	12.00	10.62	12	2.120	17.25	215		
	219.1	552.5	127.0	317.5	219.2	304.8	269.7		53.80	438.2			
10	10.75	26.50	6.500	16.50	10.75	14.75	12.75	12	2.620	21.25	406		
	273.0	673.1	165.1	419.1	273.0	374.7	323.8		66.55	539.8			
12	12.75	30.00	7.250	18.25	12.75	17.38	15.00	12	2.880	24.38	572		
	323.8	762.0	184.2	463.6	323.8	441.5	381.0		73.15	619.3			

Notes

- Dimension B corresponds to the pipe inside diameter. Values quoted assume 40S/Standard wall thickness.
- Weights are based on manufacturer's data and are approximate.
- For ring joint facings see page 8-6. For weld end bevel see page 8-5.
- For tolerances see page 8-4.